

CEHA 5105^{Cargo} LPG – Truck Pump



Side Channel Pump with special NPSH Impeller with built in hydraulic motor.

TECHNICAL DATA

Output	:	max. 400 l/min (with gas pendulum line)
Differential pressure	:	max 16 bar
Speed	:	max. 1800 rpm
Shaft sealing	:	Balanced mechanical seal
Nominal pressure	:	PN 40
LPG	:	Propane / butane
Temperature	:	-25°C to+80°C (-40°C option)
Flange connections	:	DIN 2501 PN 25/40
Sound level	:	66 dB _(A) (only pump)
mat. design	:	EN JS 1025 (nodular iron GGG40.3)
ATEX 94/9/EC	:	Ex II 2 G c T1-T5
Motor	:	Hydraulic motor F12 -30 ISO attached.



sp.gr. = 560 kg/m³

CEHA 5105

visc. ν = 0,5 m²/s

APPLICATION

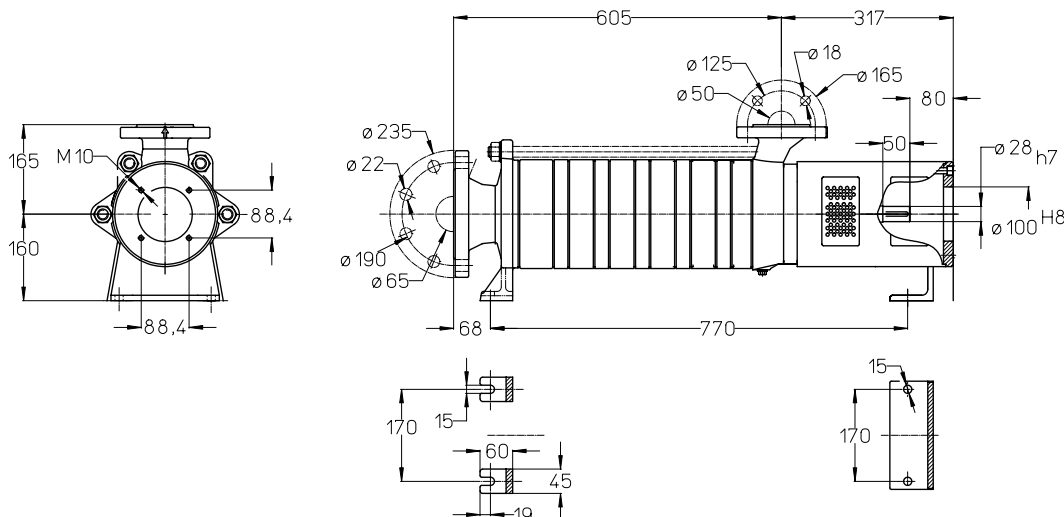
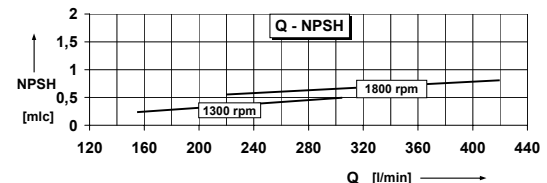
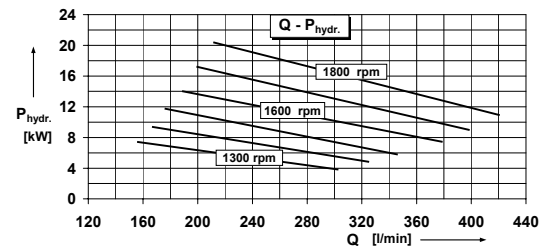
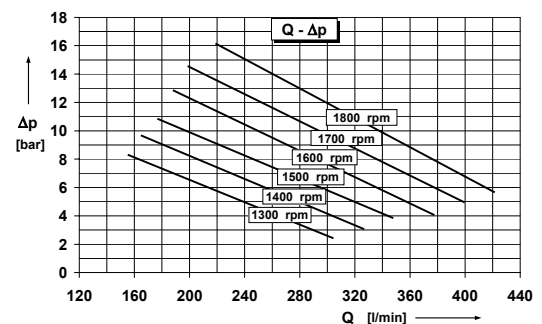
Road tanker loading/off loading

CEH^{Cargo} pumps are horizontal side channel pumps, for the handling of liquefied gas, specifically designed for truck installation. It's a segmental type construction with fully open gas handling vane wheel impellers with the advantage of low noise, high efficiency and high reliability. To obtain the excellent NPSH values, the CEH pump combines a multi-stage & gas priming configuration with a proven design of NPSH inducer.

This pump comes with a hydraulic motor attached, ready for easy and simple installation.

This pump has been designed to meet the new EU standards for tank refilling noise, especially as this has to be done during the night time hours.

- Higher reliability
- Low noise
- Lower operating costs
- Higher operating efficiency
- Easy of maintenance
- Reduced filling time
- Improved operator efficiency



SIHI Pumps (Asia) Pte Ltd

25 International Business Park - #01-02 German Centre - Singapore 609916
 Tel: +65 6562 8309 - Fax: +65 6562 8308 - Email: info@sihipumpsasia.com
 Internet: http://www.sihipumpsasia.com